

# How the masks save the blue forest!

Texts & illustrations

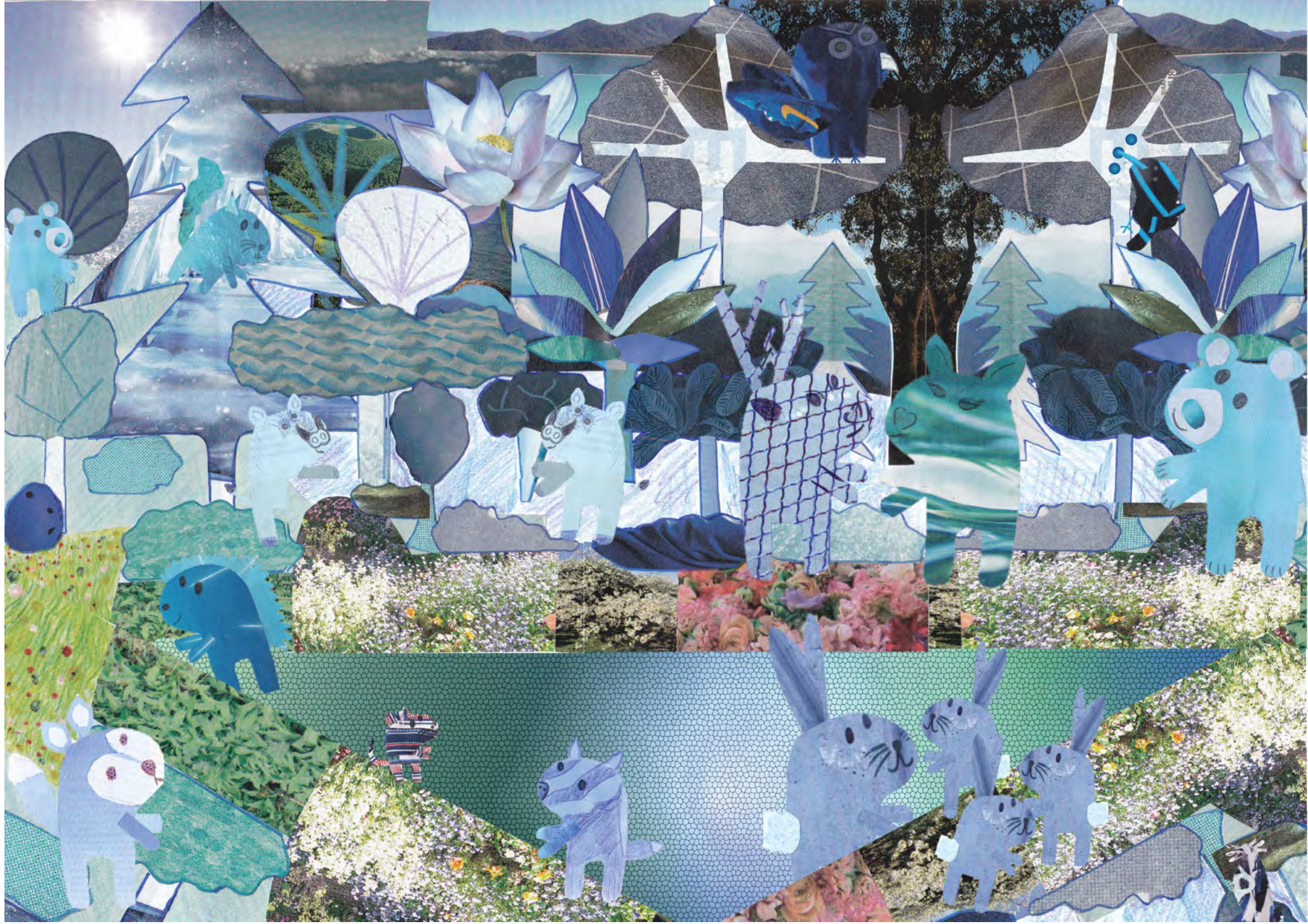
Sarah Duponchel



In the blue forest,  
all the animals are blue.

But one morning...







The animals saw  
one RED animal!!

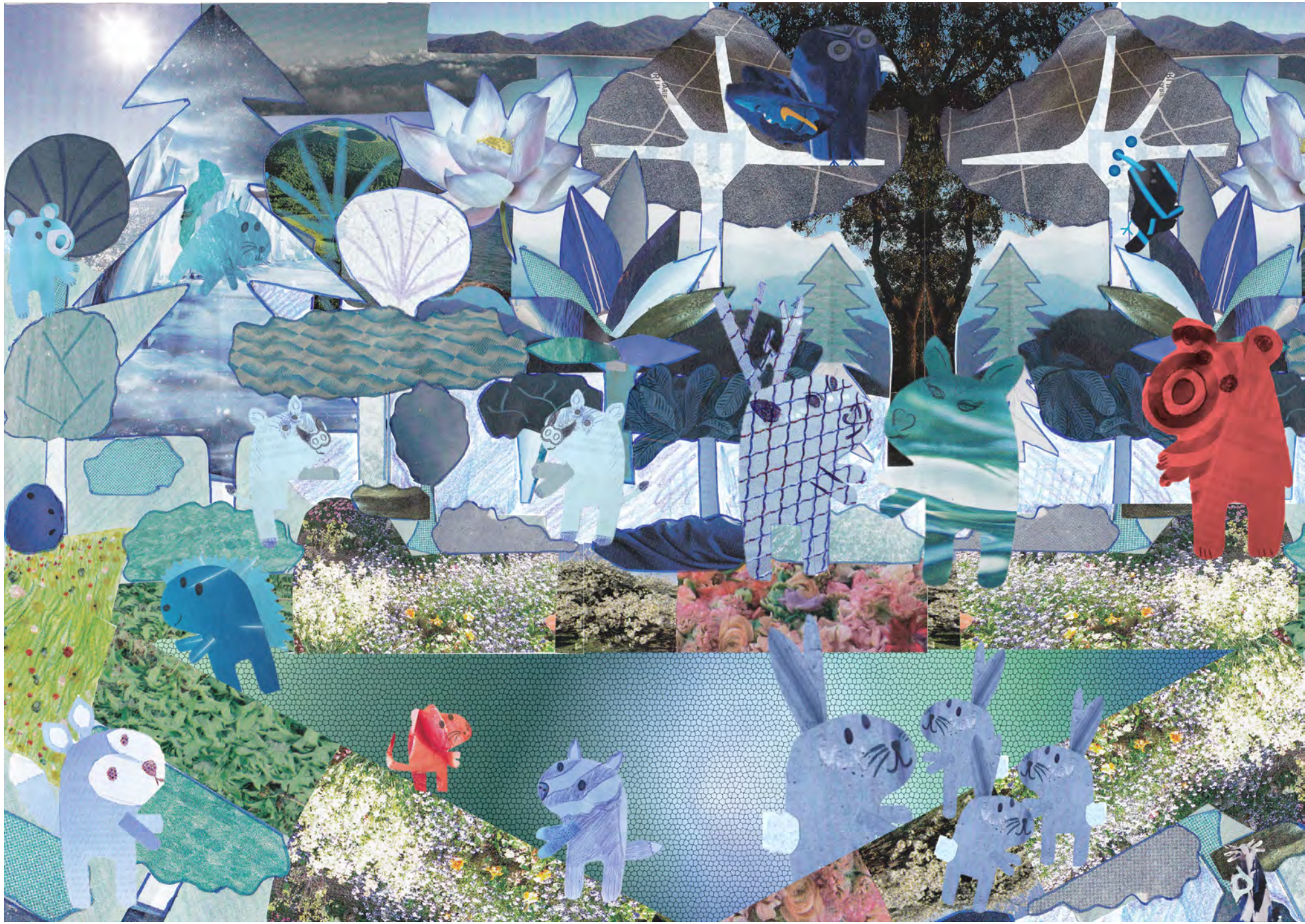






The next morning,  
two animals were  
**RED!!**







Two days later, there were already  
three RED animals in the forest!!







In the following days,  
more and more animals turned  
**RED!!**

What was happening in  
the blue forest?







The animal council decided to meet in order to understand the situation and find a solution.

As they were talking, the mole appeared and said:





- Thanks to my tunnels, I just came from the vet', she has explained everything to me!

The blue forest is infected by the Reddishvirus!

- What should we do? asked the animals





- First of all, you must  
wash your hands  
properly for at least 20 seconds!  
Always before eating and  
always after coming home or  
going to the toilet or after coughing.



## BEFORE



preparing meals or eating

## AFTER



blowing your nose  
coughing  
sneezing



visiting a sick  
person



going outside



taking public  
transportation



going to the  
toilet

## THE 6 STEPS OF HANDWASHING

Palm  
to palm



The back of  
the hands



In between  
the fingers



The back of  
the fingers



The  
thumbs

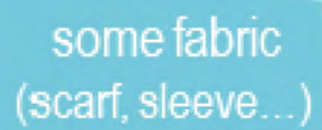
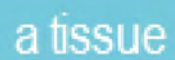


The tips of  
the fingers





- And besides, when we cough or sneeze, we must do so in our elbow or our handkerchief.





- That is clear! replied the animals  
But we know that and are doing all  
that already!

- And it is very good! said the mole.  
Here is something else we can do.





- *We can* wear a mask!

- A mask?!?





- Oh no, not these!! laughed the mole.  
A mask like this! A mask that can  
cover our nose and our mouth!
- And how does it work? asked the  
animals.





- Let's take an example, explained the mole,  
if a RED animal surrounded by BLUE animals wears a mask and then, all of a sudden, starts coughing...





... then it is the mask that becomes  
**RED!**

And the animals around stay **BLUE!**





- Now, continued the mole,  
if a BLUE animal wears a mask and  
around him, RED or BLUE animals  
suddenly start to cough or sneeze...





... in this case, once again,  
it is the mask that becomes **RED**!

And the **BLUE** animal stays **BLUE**!





- Ah, we understand.

If I wear a mask, I protect you!

If you wear a mask, you protect me!

And what should we do with the  
mask after use?





- Well, replied the mole:

Disposable masks should be thrown  
in the bin!

Masks sewn by us, or our parents, or our  
grand-parents, or members of our family, or our friends...  
must be washed with soapy water  
and dried before reusing them.

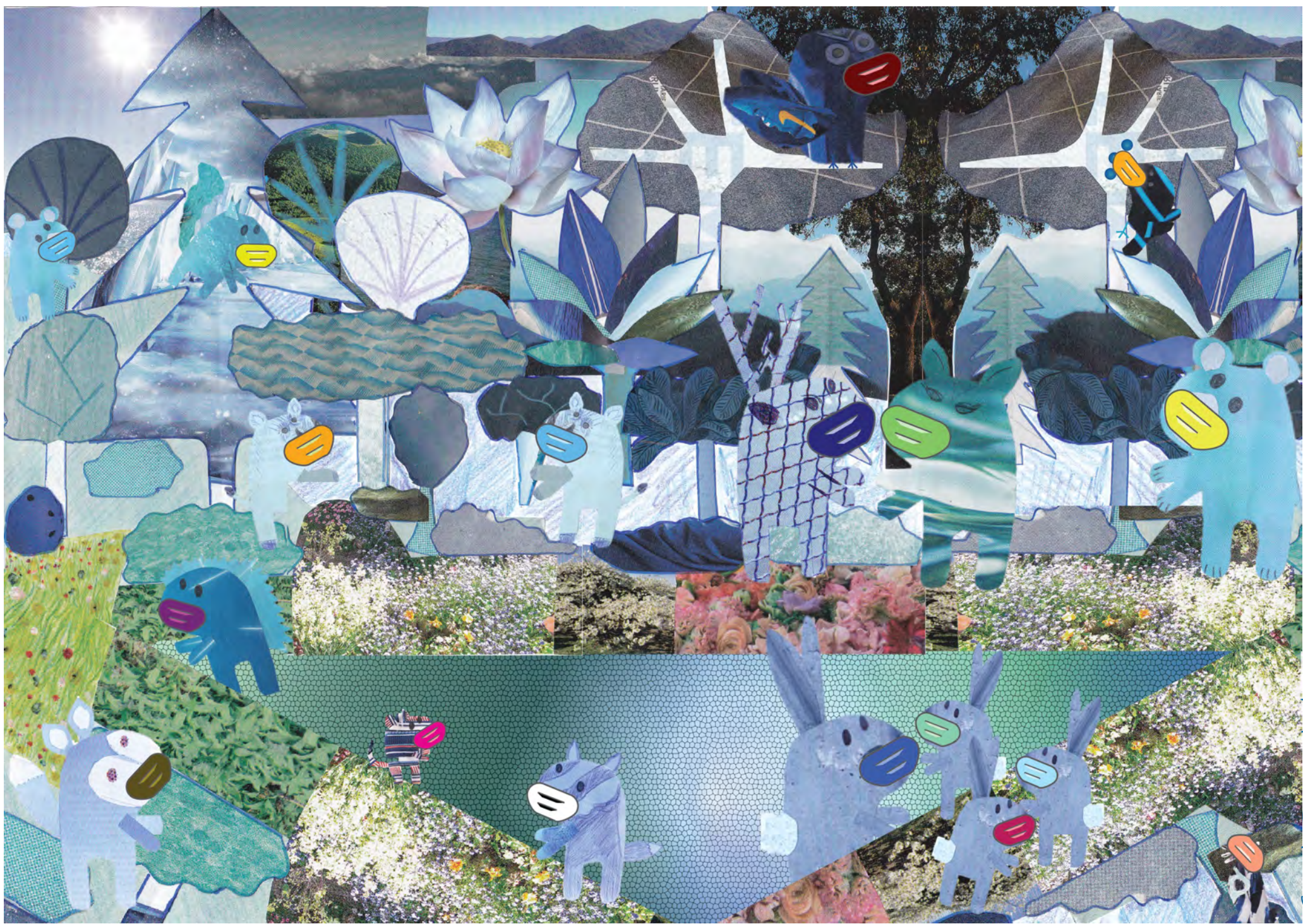
And don't forget to wash your hands!





This is how, by following  
the hygiene rules,  
all the animals in the blue forest  
remained blue.









# Crédits:

I thank Matthieu Maudet and his « socks-animals » that inspired my characters.

Ministère des Solidarités et de la Santé français

Miguel Discart

Zenspa1

Orlando Fringe

Marco Verch Professional Photographer and Speaker

Giorgio Minguzzi

Allen

Mikhail Esteves

svklimkin

Alistair Israel

George Tan

Chris Alban Hansen

Brenda Kochevar



In the blue forest,  
all the animals are blue.

But one morning...